

High Temperature Black Body Furnace

Wide Temperature Range

CALsys 1000BB offer a wide temperature range from 50 °C to 1000 °C

Simple to use

The CALsys 1000BB is ideal for Industrial/Laboratory field use. It is simple enough to testing and calibration uses.

Speed

The Calsys 1000BB extremely quick to reach various temperatures.

Accuracy and performance

The Calsys 1000BB is an easily portable unit that also provides excellent calibration accuracy with stability $\pm 0.6^{\circ}\text{C}$

Accredited calibration

Each Calsys 1000BB is delivered with an accredited calibration certificate.

Computer Interface

The communication port (RS-232/USB) enables communication with selected Calsys 1000BB calibrators for automation calibration and documentation thus it made documentation easy.

Calsys 1000BB

Highly Accurate Black Body Temperature Calibrator
For Industrial / Laboratory Field Use

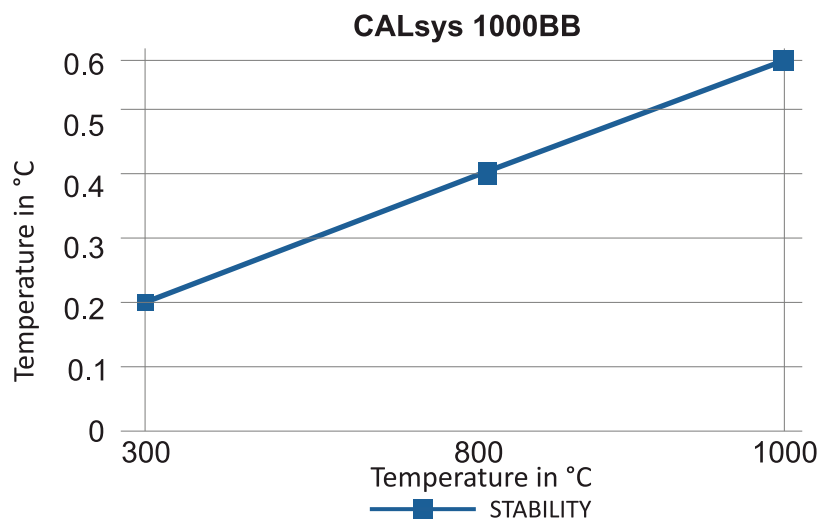


Calsys 1000BB offers easy to use blackbody calibrator with high temperature range from 50 to 1000°C. It is a highly stable standard furnace for calibrating pyrometer and non contact sensor. This calibrator can be used on site for high temperature calibration and also find application in pyrometer industry, non contact sensor calibration. the unique feature of this black body furnace is large temperature control black body target with cavity dimension of 29 mm dia with 150 mm depth which offers large view for IR camera . The temperature of the calibrator is set and controlled by a self tuned PID controller with automatic super fine adjustment. Our newly designed CALsys 1000BB model offers better esthetic design and performance wise upgraded to next level. The emissivity of the target is 0.99(± 0.01).With the Tempsens make Temperature Calibrator, you have chosen an extremely effective instrument which we hope will live up to all your expectations. This is a fast, timesaving, and reliable true industrial temperature calibrator designed for on-site use.During the past several years, we have acquired extensive knowledge of industrial temperature calibration. This expertise is reflected in our products which are all designed for daily use in an industrial environment.

SPECIFICATIONS

Temperature Range	50 to 1000°C
Temperature Resolution	0.1
Cavity Uniformity	±4 or better (at 800°C Or higher)
Stability	±0.3°C at 50°C
	±0.4°C at 500°C
	±0.6°C at 1000°C
Emissivity	0.95 (±0.02)
Controlling Sensor	"R" Type Thermocouple
Method of Control	Digital self tuned PID Controller
Time to reach max temp	≤1.5 hr
Computer Interface	RS - 232/USB
Operating Temp	20 to 45°C
Power Requirement	230VAC, 2KW
Dimensions	270(H) x 360(W) x 270(D) mm
Radiation Cavity Type	Silicon Carbide
Cavity Dimension	29 mm Dia x150 mm depth
External Aperture	25 mm dia
Weight	Approx 15 Kg

STABILITY OF CALSYS 1000 BB



Access Opening 1000BB

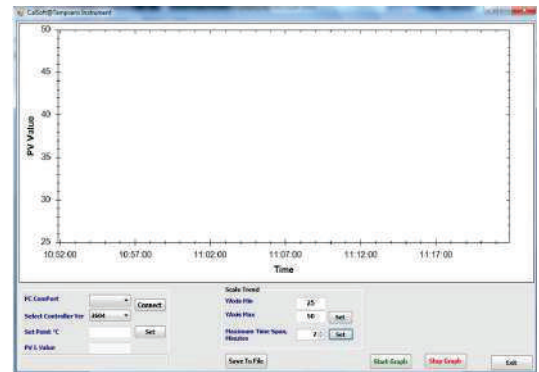
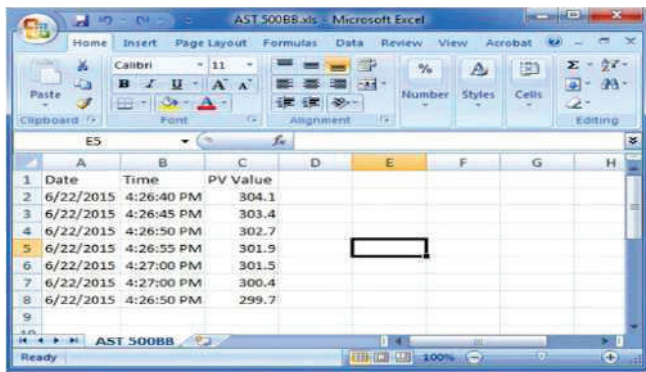
Blackbody Cavity for CALsys 1000BB models

We use 29mm dia silicon carbide Cavity in CALsys 1000BB. We also offer customized access opening based on Customer requirements.



Silicon Carbide Cavity.

SOFTWARE



- CalSoft including for setting bath temperature and monitoring the PV. Graphical representations of PV/TIME with 2 hours data logging.

ACCESSORIES

- Master Pyrometer (Optional)
- Black Body Cavity
- Calsoft Software
- Operational Manual
- NABL accredited calibration certificate (Optional)

